



617 BEARBERRY PLACE, MILTON

30-05 (A) | LOT 44

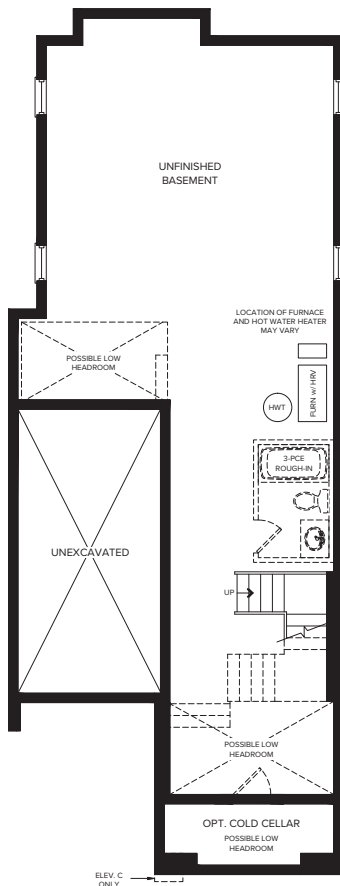
2,161 SQ.FT. | 4 BEDROOMS | 2.5 BATHS

DETAILS

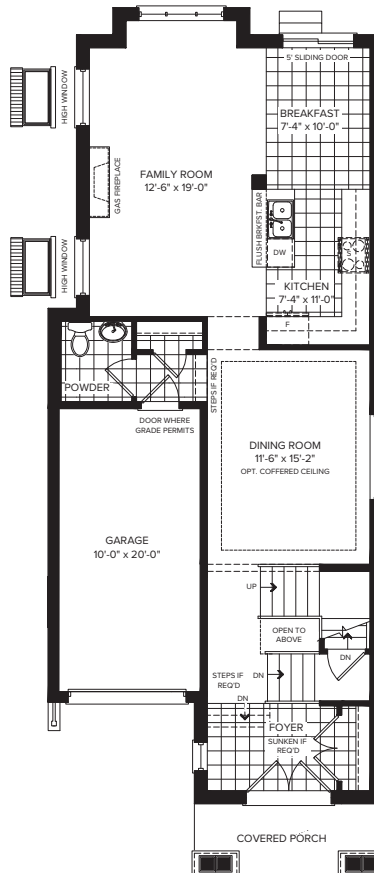
- 9' Smooth ceiling on main floor
- 3 3/4" Stained oak hardwood throughout main floor & stained oak staircase throughout
- Granite kitchen countertops, undermounted sink
- 42" Kitchen upper cabinets
- Kitchen backsplash
- Frameless glass shower in primary ensuite
- Central air
- 3 Piece rough-in in basement



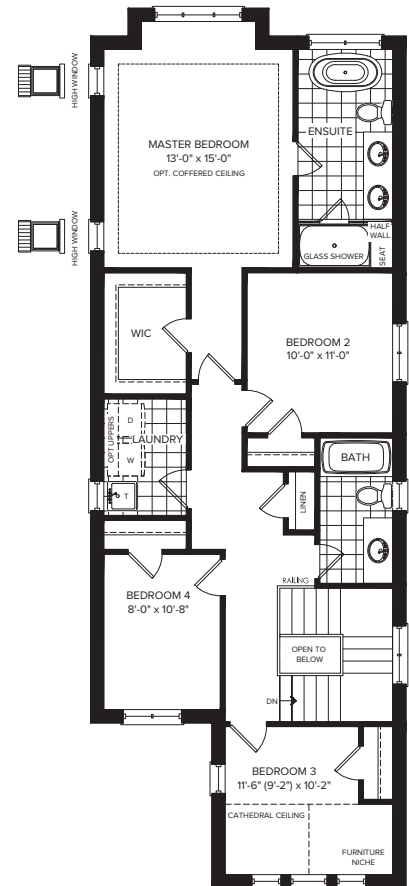
BASEMENT



GROUND FLOOR



SECOND FLOOR



Plan is not to scale and all illustrations are artist concept only. Dimensions, specifications, layouts and materials are approximate only and are subject to change without notice. Tile patterns may vary. Window size and location may vary. Actual usable floor space may vary from stated floor area. Bulkheads required for mechanical purposes such as kitchen and washroom exhausts and heating and cooling ducts have not been indicated. Balcony location(s) and sizes vary per floor. Furniture and islands shown are displayed for illustration purposes only and are not included in the sale price. Houses are sold unfurnished. E.&O.E.

**CONTACT US TODAY
TO BOOK AN APPOINTMENT**
647.201.0976
16MILECREEK@PRIMONT.COM

primont



605 BEARBERRY PLACE, MILTON

30-05 (B) | LOT 46

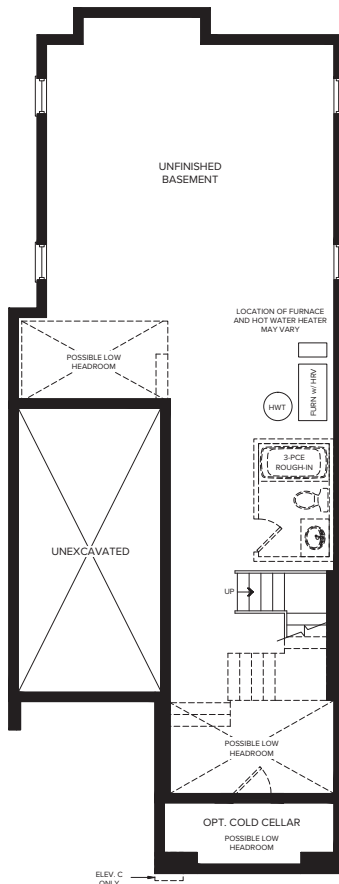
2,161 SQ.FT. | 4 BEDROOMS | 2.5 BATHS

DETAILS

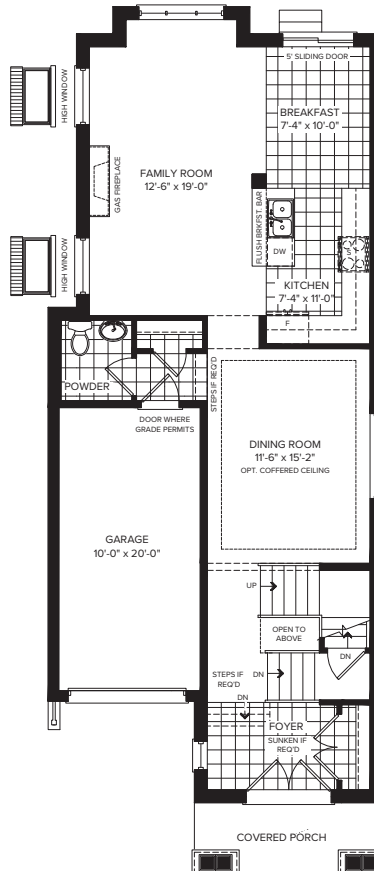
- Premium 41' frontage
- 9' Smooth ceiling on main floor
- 3 3/4" Stained oak hardwood throughout main floor & stained oak staircase throughout
- Granite kitchen countertops, undermounted sink
- Upgraded quartz countertops with undermounted sink in primary ensuite, main bath and powder room
- Main floor potlights
- 3 Piece rough-in in basement



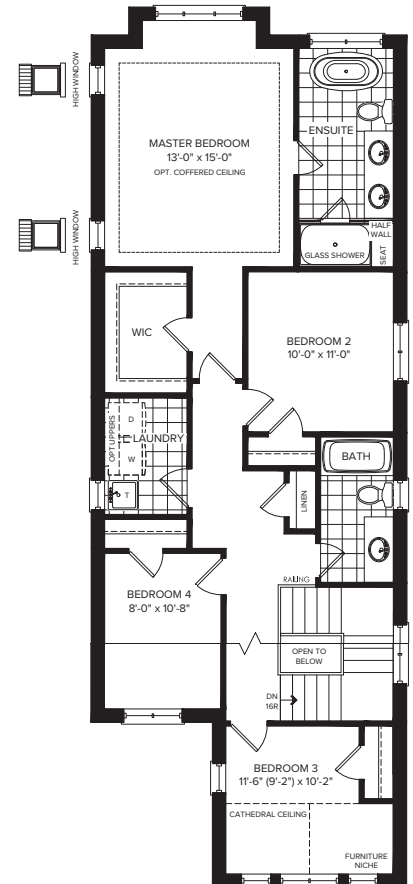
BASEMENT



GROUND FLOOR



SECOND FLOOR



Plan is not to scale and all illustrations are artist concept only. Dimensions, specifications, layouts and materials are approximate only and are subject to change without notice. Tile patterns may vary. Window size and location may vary. Actual usable floor space may vary from stated floor area. Bulkheads required for mechanical purposes such as kitchen and washroom exhausts and heating and cooling ducts have not been indicated. Balcony location(s) and sizes vary per floor. Furniture and islands shown are displayed for illustration purposes only and are not included in the sale price. Houses are sold unfurnished. E.&O.E.

**CONTACT US TODAY
TO BOOK AN APPOINTMENT**
647.201.0976
16MILECREEK@PRIMONT.COM

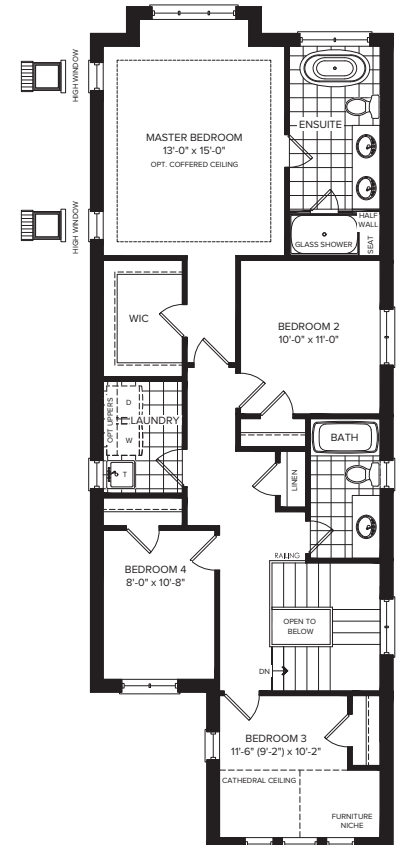
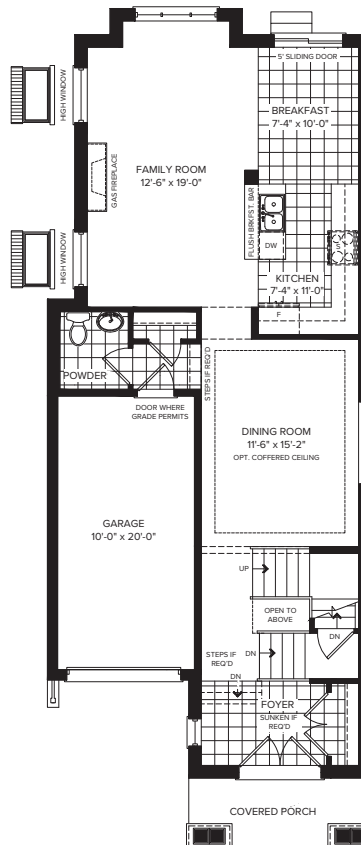
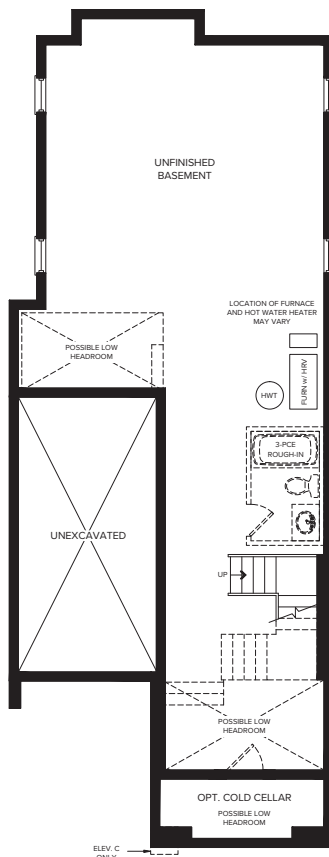


2,150 SQ.FT. | 4 BEDROOMS | 2.5 BATHS

- 9' Smooth ceiling on main floor
- 3 3/4" Stained oak hardwood throughout main floor & stained oak staircase throughout
- Upgraded quartz kitchen countertops & upgraded blanco undermounted sink
- 42" Kitchen upper cabinets
- Valance light under cabinets in kitchen
- Upgraded bathroom fixtures in primary ensuite and main bath
- EV Charger outlet in garage
- 3-Piece rough-in in basement



SECOND FLOOR



**CONTACT US TODAY
TO BOOK AN APPOINTMENT**
647.201.0976
16MILECREEK@PRIMONT.COM

3010 + 1218 SQ.FT. FINISHED BASEMENT
4 BEDROOMS | 3.5 BATHS

DETAILS

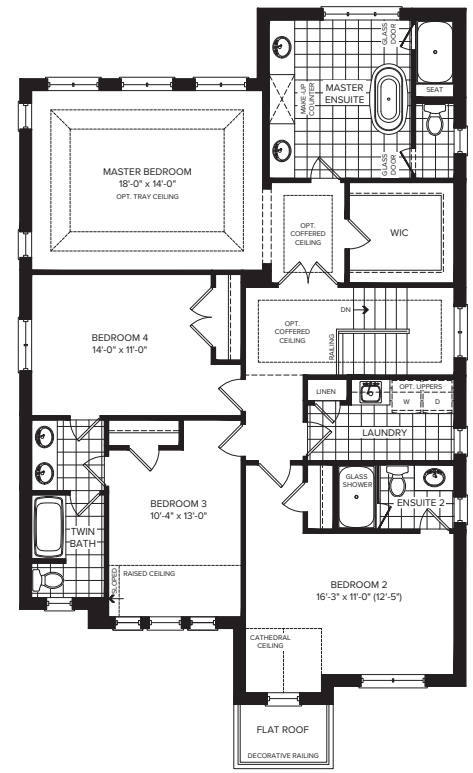
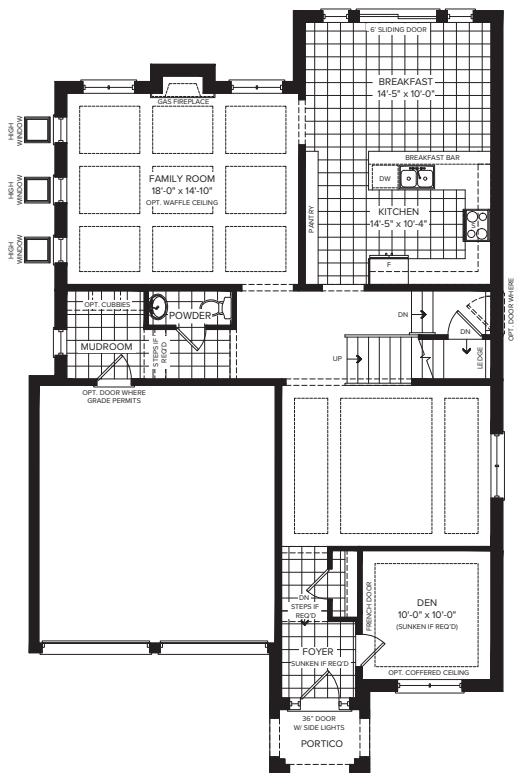
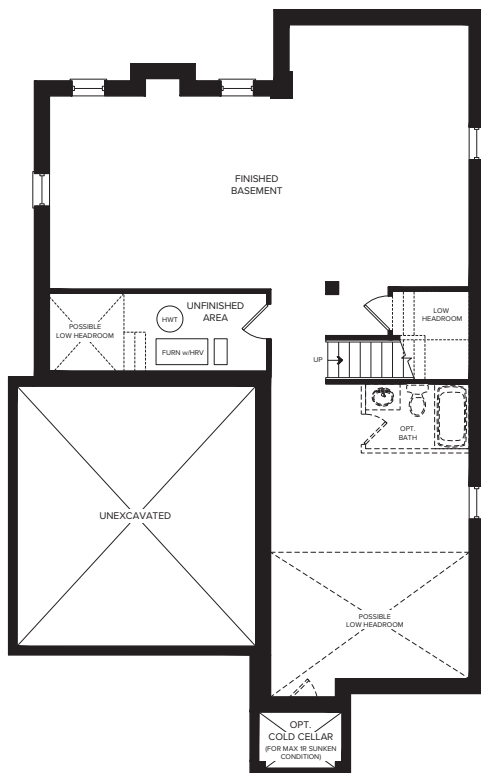
- Ravine lot
- Side door
- 9' ceiling on main floor
- 3 3/4" Stained oak hardwood throughout main floor, upgraded tile on main floor & stained oak staircase throughout and wrought iron railings
- Upgraded quartz kitchen countertops & undermounted sink
- 200 amp service
- Finished basement with 3 piece bathroom rough-in & cold cellar



BASEMENT

GROUND FLOOR

SECOND FLOOR



Plan is not to scale and all illustrations are artist concept only. Dimensions, specifications, layouts and materials are approximate only and are subject to change without notice. Tile patterns may vary. Window size and location may vary. Actual usable floor space may vary from stated floor area. Bulkheads required for mechanical purposes such as kitchen and washroom exhausts and heating and cooling ducts have not been indicated. Balcony location(s) and sizes vary per floor. Furniture and islands shown are displayed for illustration purposes only and are not included in the sale price. Houses are sold unfurnished. E.&O.E.

**CONTACT US TODAY
TO BOOK AN APPOINTMENT**
647.201.0976
16MILECREEK@PRIMONT.COM

**pri
mont**

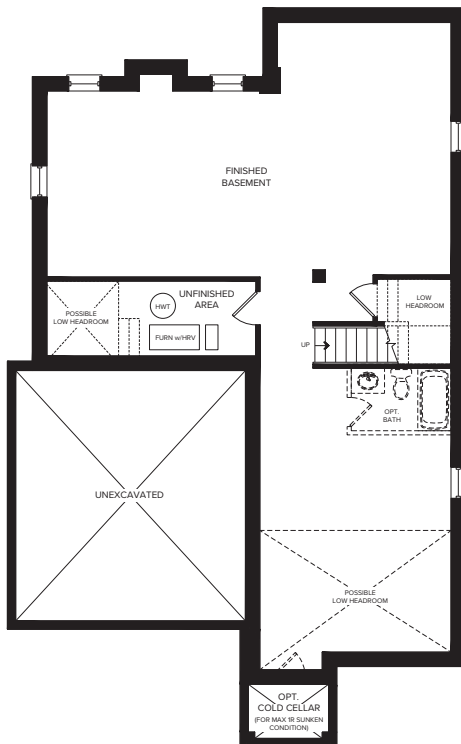
3007 + 1218 SQ.FT. FINISHED BASEMENT
4 BEDROOMS | 3.5 BATHS

DETAILS

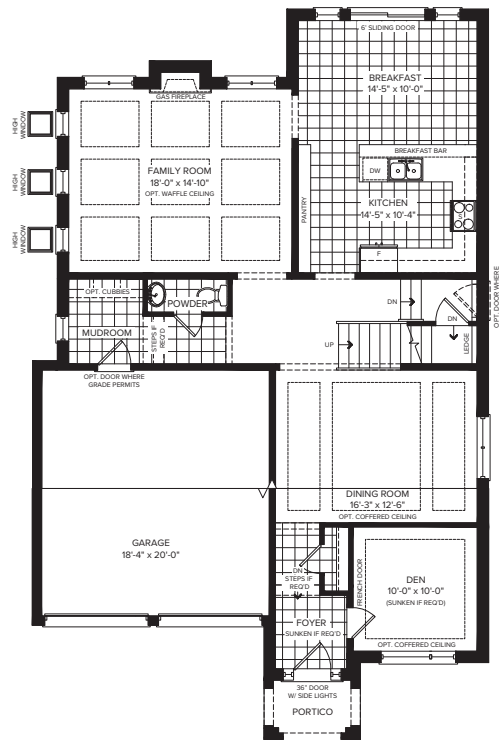
- Ravine lot
- Side door
- 9' Ceiling on main floor
- 3 3/4" Stained maple hardwood throughout main floor & stained oak staircase throughout
- Granite kitchen countertops, under mounted sink
- Frameless glass shower and upgraded tile in primary ensuite
- EV Charger outlet in garage
- Finished basement with 3 piece bathroom rough-in



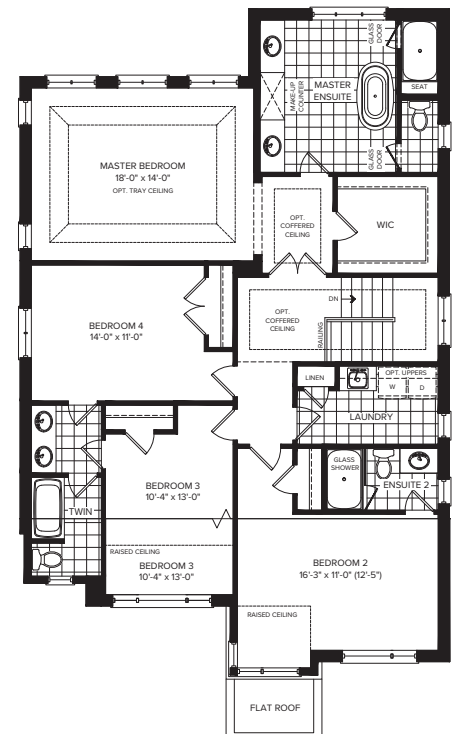
BASEMENT



GROUND FLOOR



SECOND FLOOR



Plan is not to scale and all illustrations are artist concept only. Dimensions, specifications, layouts and materials are approximate only and are subject to change without notice. Tile patterns may vary. Window size and location may vary. Actual usable floor space may vary from stated floor area. Bulkheads required for mechanical purposes such as kitchen and washroom exhausts and heating and cooling ducts have not been indicated. Balcony location(s) and sizes vary per floor. Furniture and islands shown are displayed for illustration purposes only and are not included in the sale price. Houses are sold unfurnished. E.&O.E.

**CONTACT US TODAY
TO BOOK AN APPOINTMENT**
647.201.0976
16MILECREEK@PRIMONT.COM

**pri
mont**

16 Mile Creek



637 FULLUM LANDING, MILTON

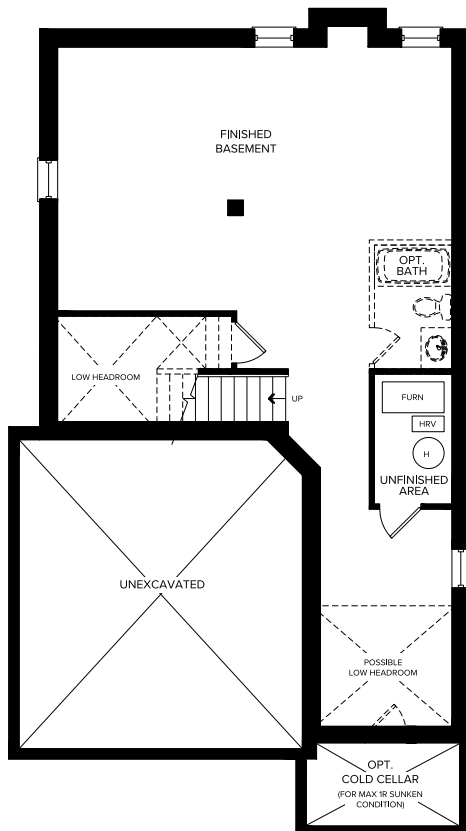
36-02 (A) | LOT 18

2226 + 796 SQ.FT. FINISHED BASEMENT

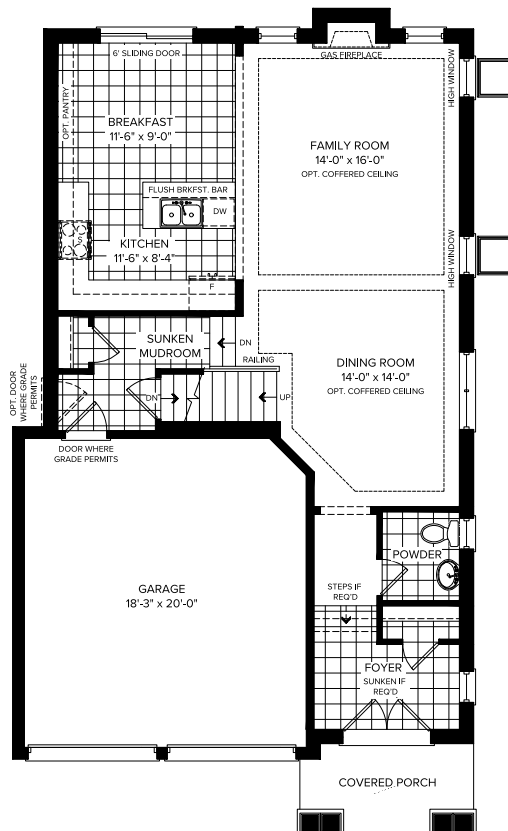
4 BEDROOMS | 2.5 BATHS



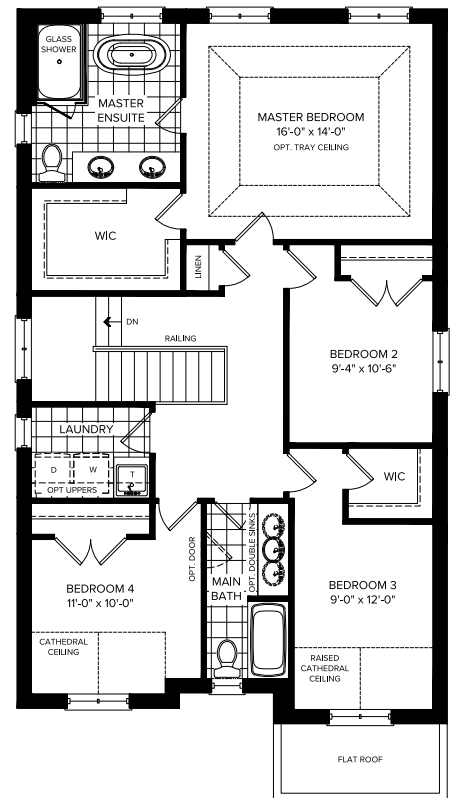
BASEMENT



GROUND FLOOR



SECOND FLOOR



Plan is not to scale and all illustrations are artist concept only. Dimensions, specifications, layouts and materials are approximate only and are subject to change without notice. Tile patterns may vary. Window size and location may vary. Actual usable floor space may vary from stated floor area. Bulkheads required for mechanical purposes such as kitchen and washroom exhausts and heating and cooling ducts have not been indicated. Balcony location(s) and sizes vary per floor. Furniture and islands shown are displayed for illustration purposes only and are not included in the sale price. Houses are sold unfurnished. E.&O.E.

**CONTACT US TODAY
TO BOOK AN APPOINTMENT**
647.201.0976
16MILECREEK@PRIMONT.COM

primont



1423 WELLWOOD TERRACE, MILTON

43-03 (C) | LOT 5

2940 + 1217 SQ.FT. FINISHED BASEMENT

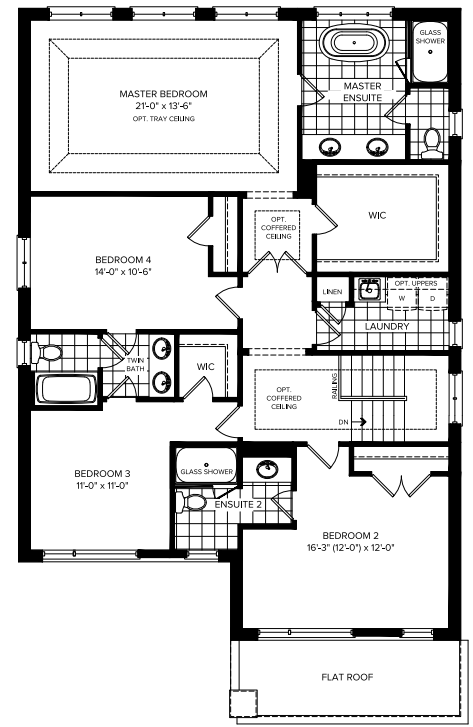
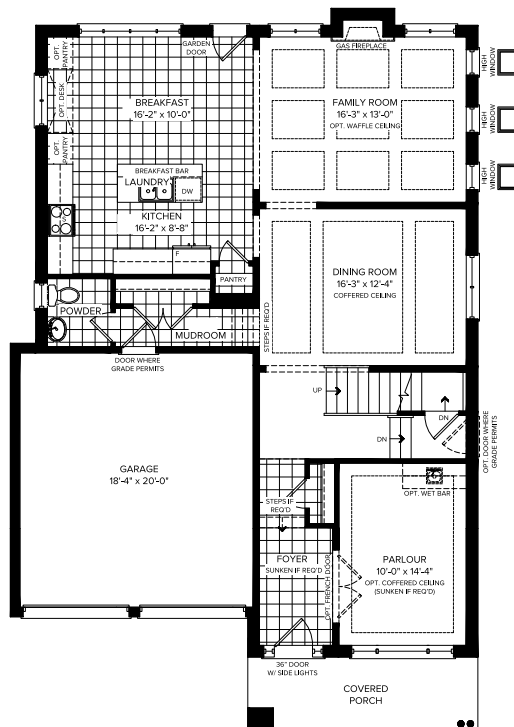
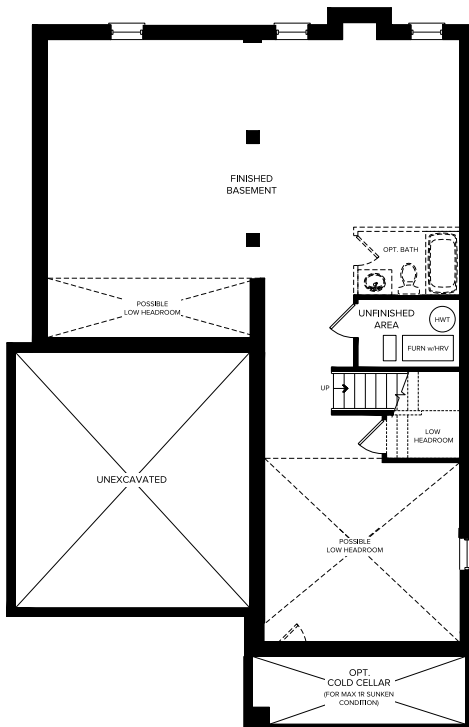
4 BEDROOMS | 3.5 BATHS



BASEMENT

GROUND FLOOR

SECOND FLOOR



Plan is not to scale and all illustrations are artist concept only. Dimensions, specifications, layouts and materials are approximate only and are subject to change without notice. Tile patterns may vary. Window size and location may vary. Actual usable floor space may vary from stated floor area. Bulkheads required for mechanical purposes such as kitchen and washroom exhausts and heating and cooling ducts have not been indicated. Balcony location(s) and sizes vary per floor. Furniture and islands shown are displayed for illustration purposes only and are not included in the sale price. Houses are sold unfurnished. E.&O.E.

**CONTACT US TODAY
TO BOOK AN APPOINTMENT**
647.201.0976
16MILECREEK@PRIMONT.COM

**pri
mont**

16 Mile Creek



1467 WELLWOOD TERRACE, MILTON

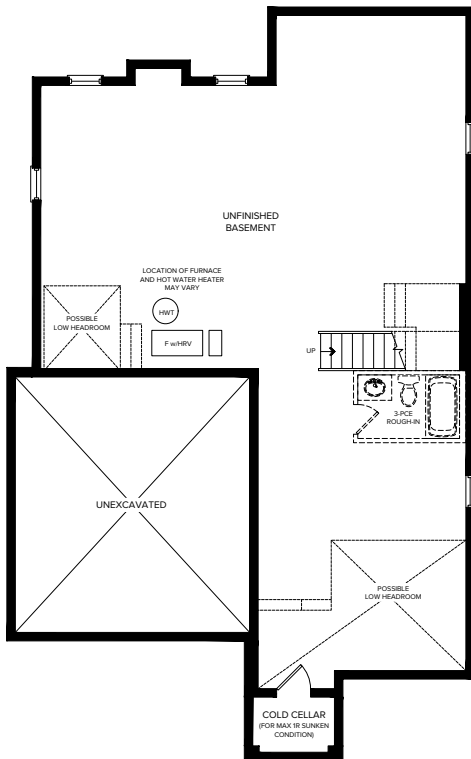
43-04 (C) | LOT 128

3007 + 1218 SQ.FT. FINISHED BASEMENT

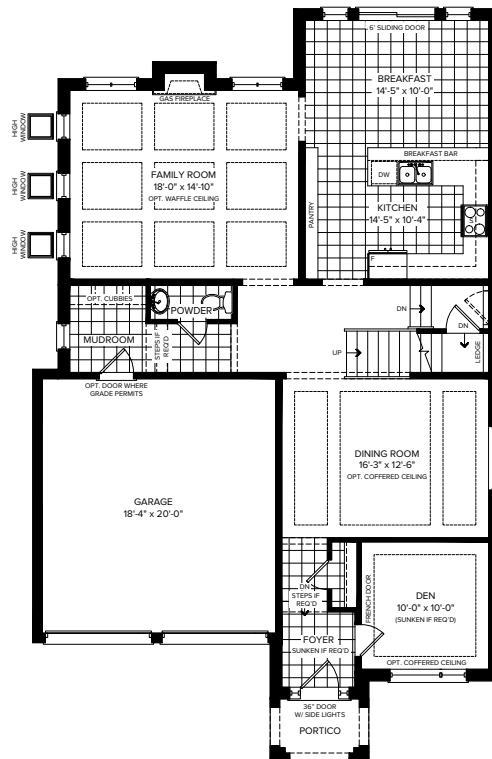
4 BEDROOMS | 3.5 BATHS



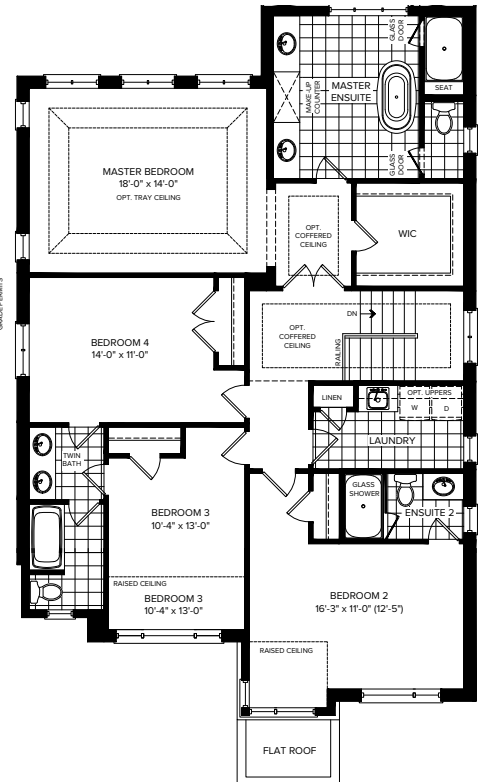
BASEMENT



GROUND FLOOR



SECOND FLOOR



Plan is not to scale and all illustrations are artist concept only. Dimensions, specifications, layouts and materials are approximate only and are subject to change without notice. Tile patterns may vary. Window size and location may vary. Actual usable floor space may vary from stated floor area. Bulkheads required for mechanical purposes such as kitchen and washroom exhausts and heating and cooling ducts have not been indicated. Balcony location(s) and sizes vary per floor. Furniture and islands shown are displayed for illustration purposes only and are not included in the sale price. Houses are sold unfurnished. E.&O.E.

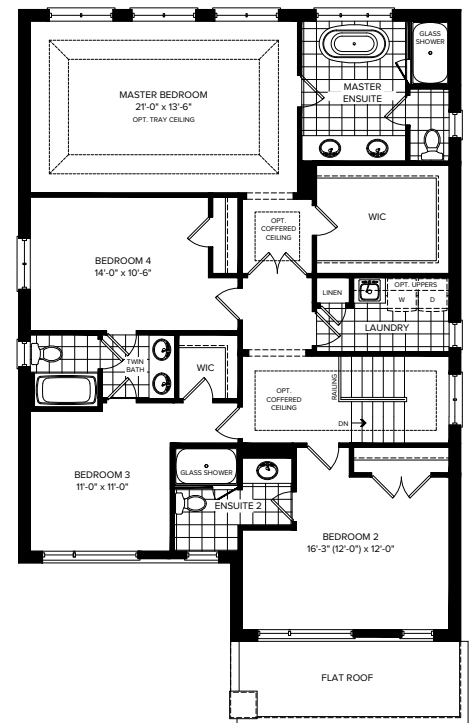
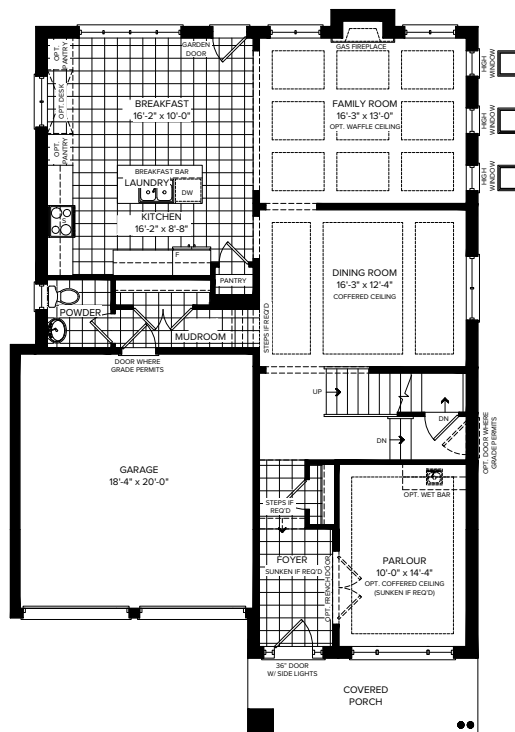
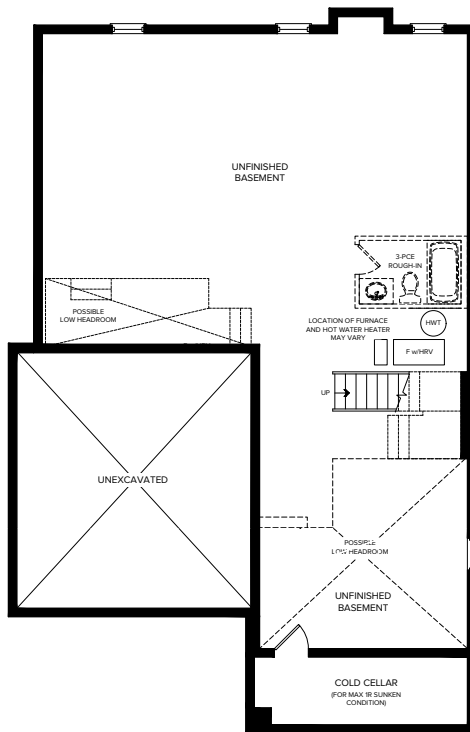
**CONTACT US TODAY
TO BOOK AN APPOINTMENT**
647.201.0976
16MILECREEK@PRIMONT.COM

primont

4 BEDROOMS | 3.5 BATHS



SECOND FLOOR



**pri
mont**